



Up Hill House

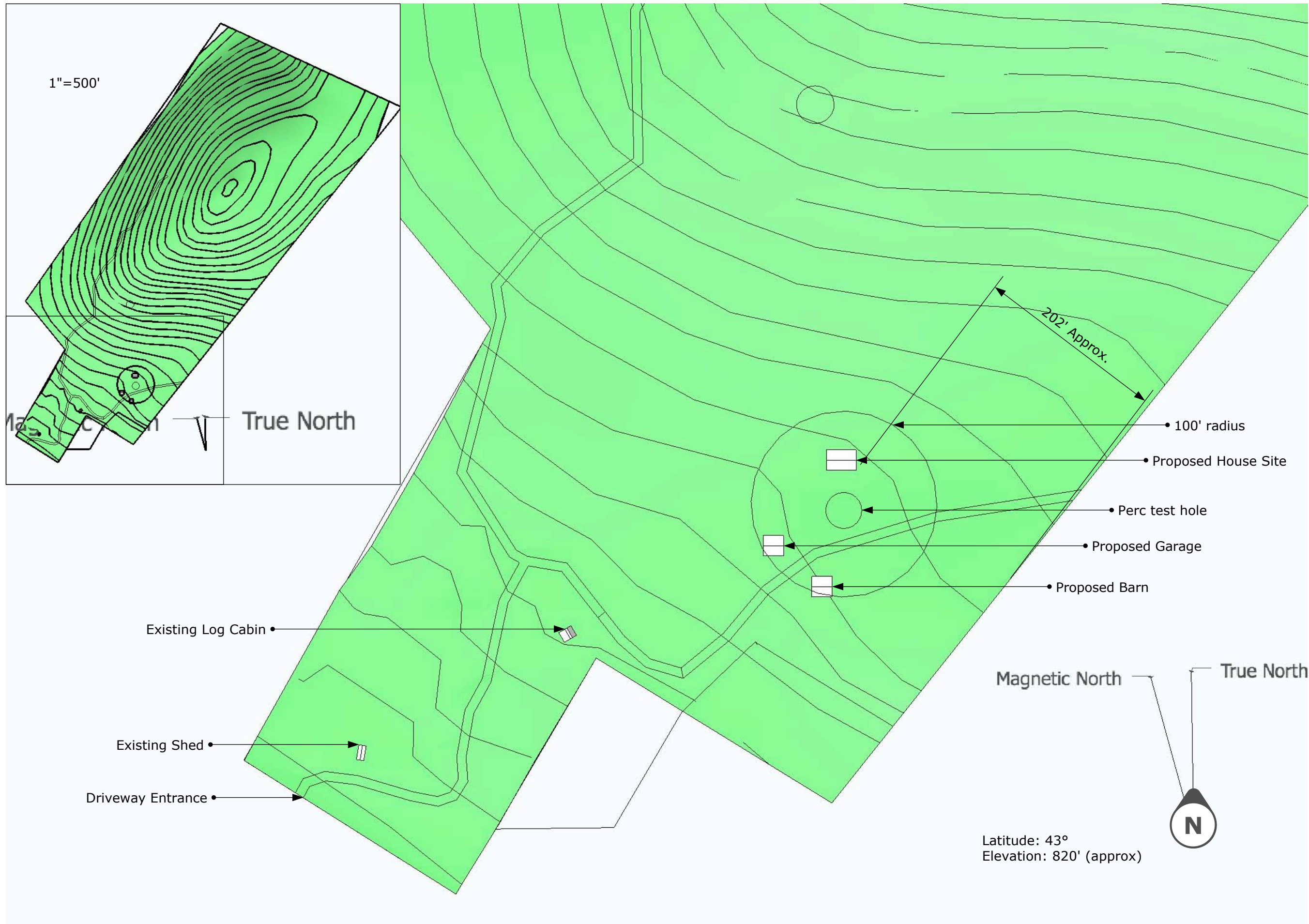
Cambridge, New York

Title:
Cover

Scale:
NA

Date:
19-Apr-2010

A-0



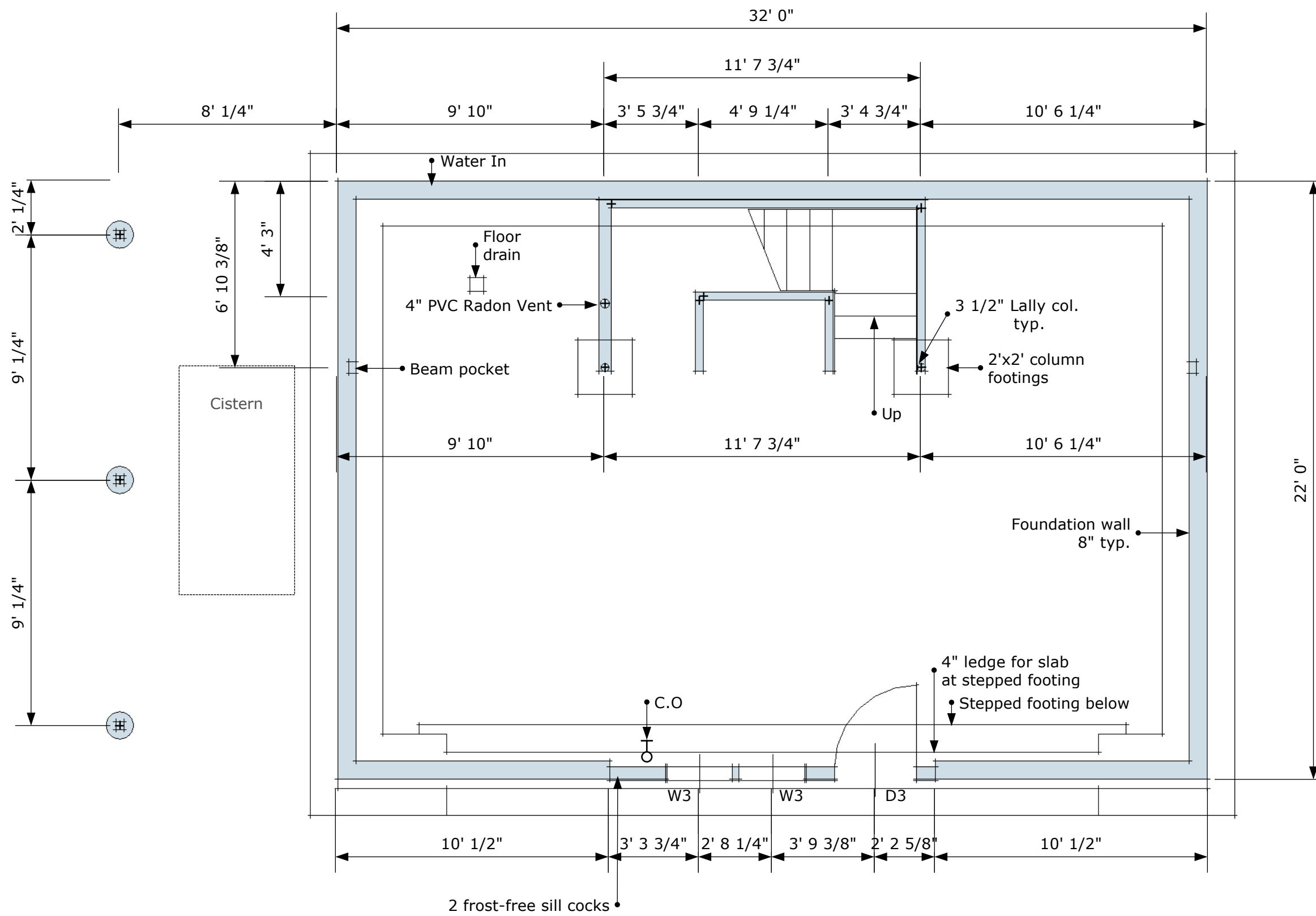
Up Hill House

Cambridge, New York

Title:
Site Plan

Approx. Scale:
1"=100'

Date:
19-Apr-2010



Up Hill House

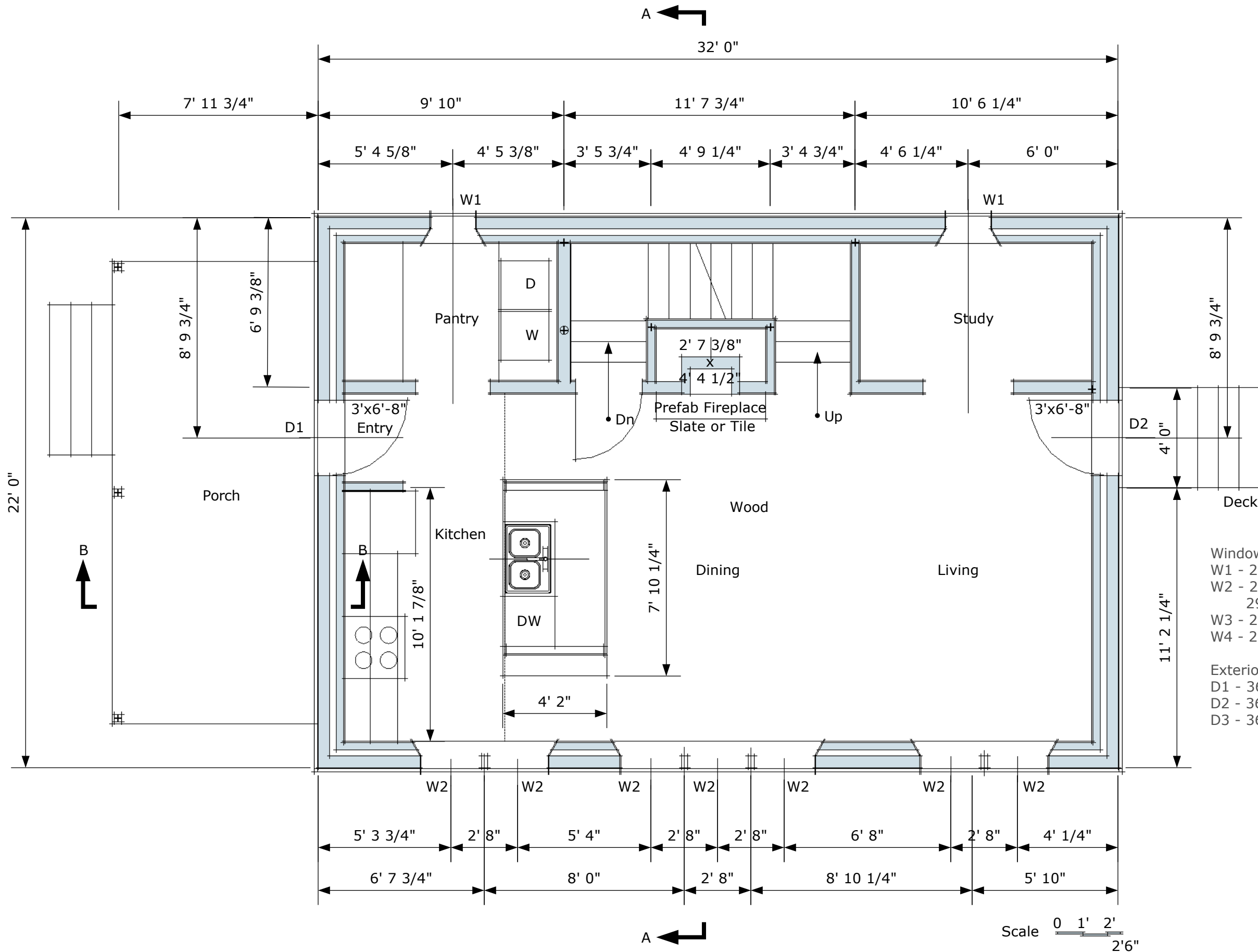
Cambridge, New York

Title:
Basement

Scale:
1/4" = 1'-0"

Date:
19-Apr-2010

A-2



- Windows
 W1 - 22x44 casement
 W2 - 29x44 casement fixed to 29x20 fixed below
 W3 - 29x44 casement
 W4 - 22x22 awning
- Exterior Doors
 D1 - 36x80 full glass
 D2 - 36x80 quarter glass
 D3 - 36x80 no glass

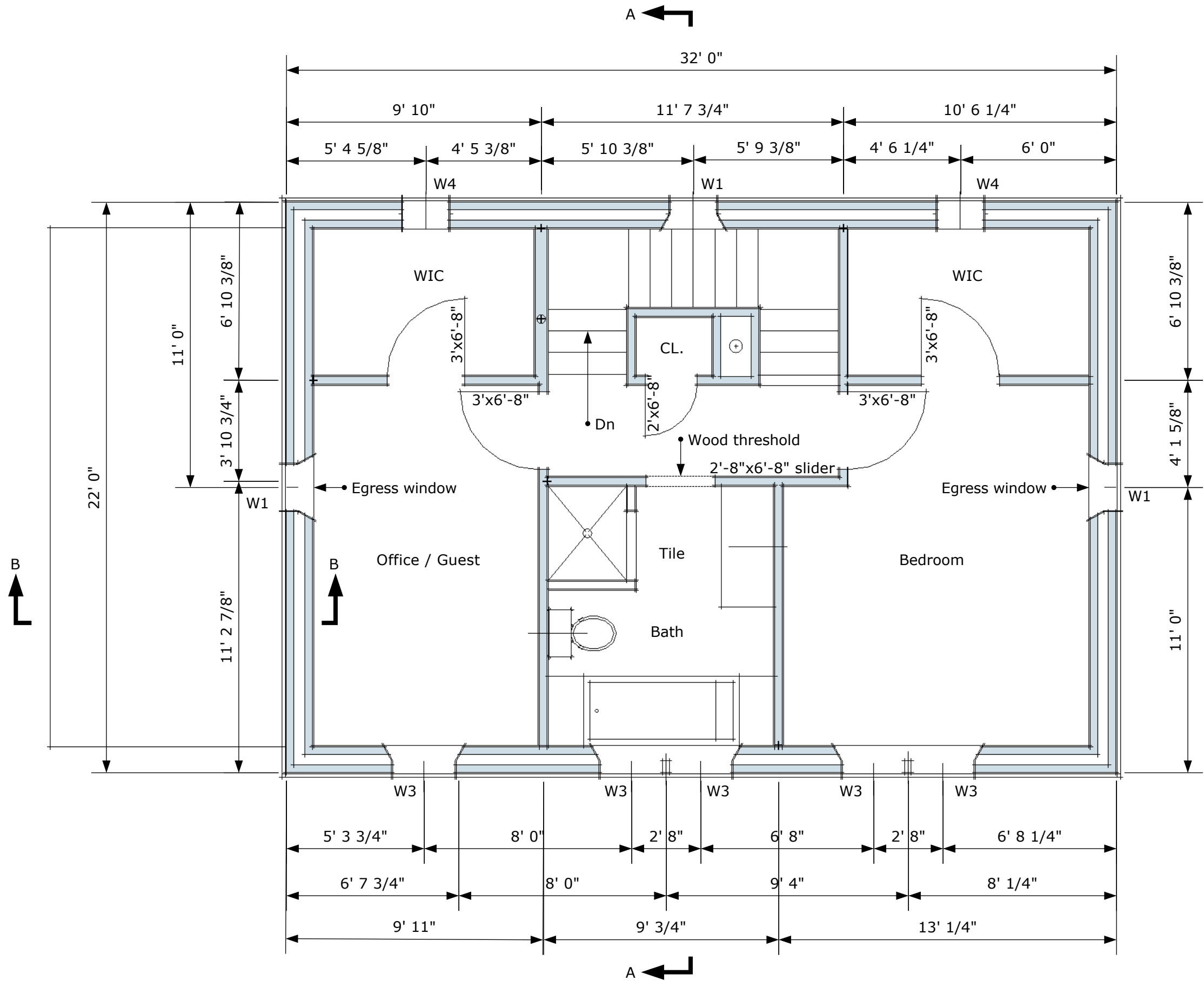
Title:
 First Floor

Scale:
 1/4" = 1'-0"

Date:
 19-Apr-2010

Up Hill House

Cambridge, New York



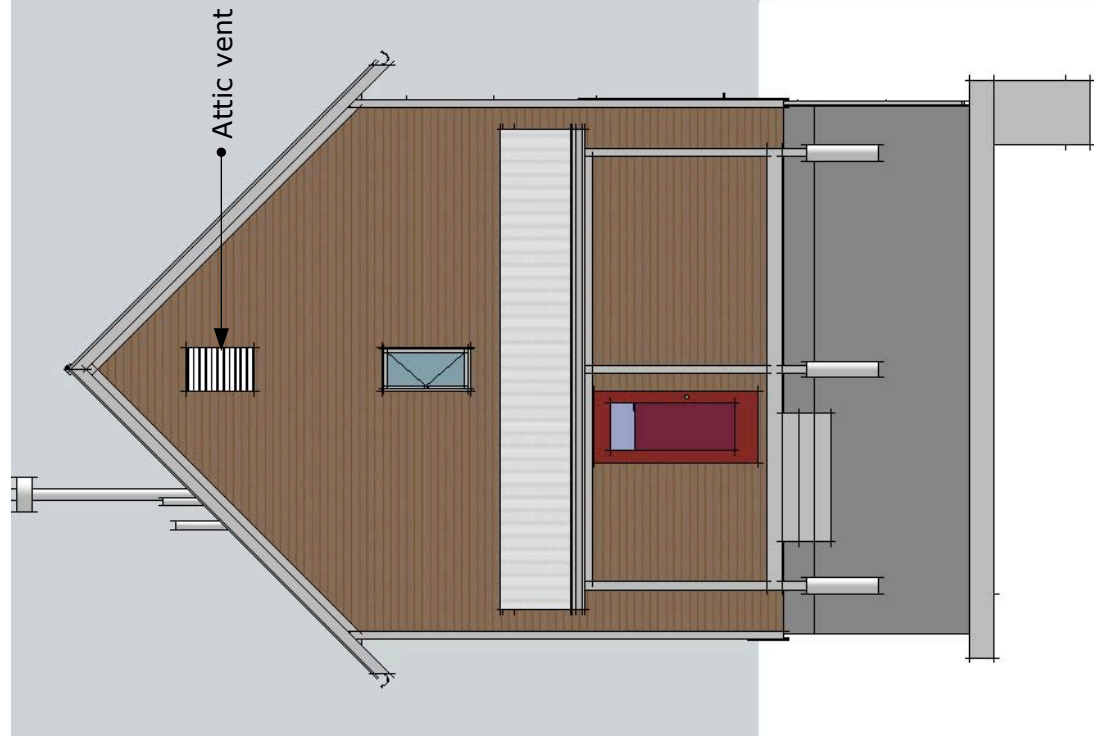
Up Hill House

Cambridge, New York

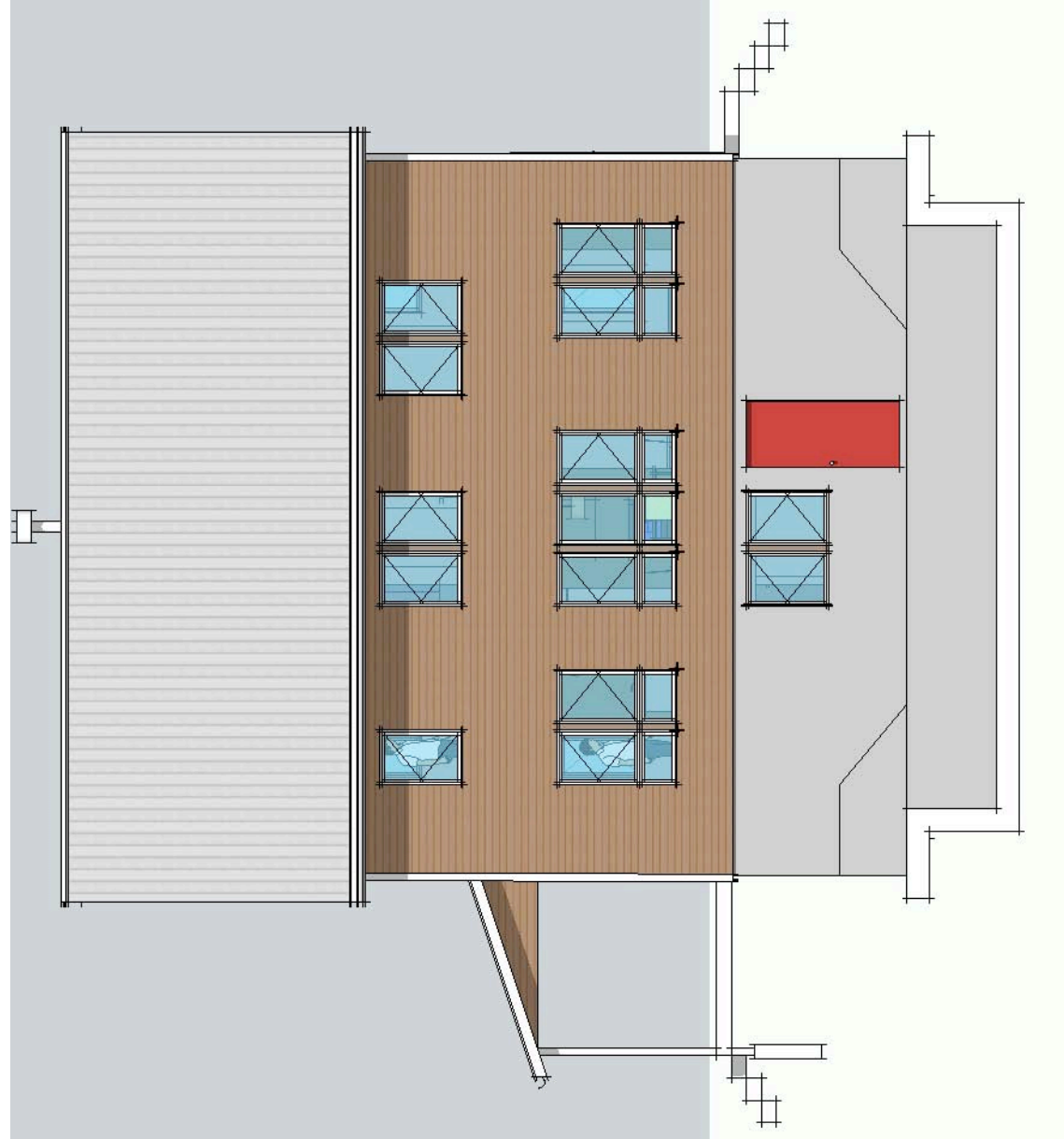
Title:
Second Floor

Scale:
1/4" = 1'-0"

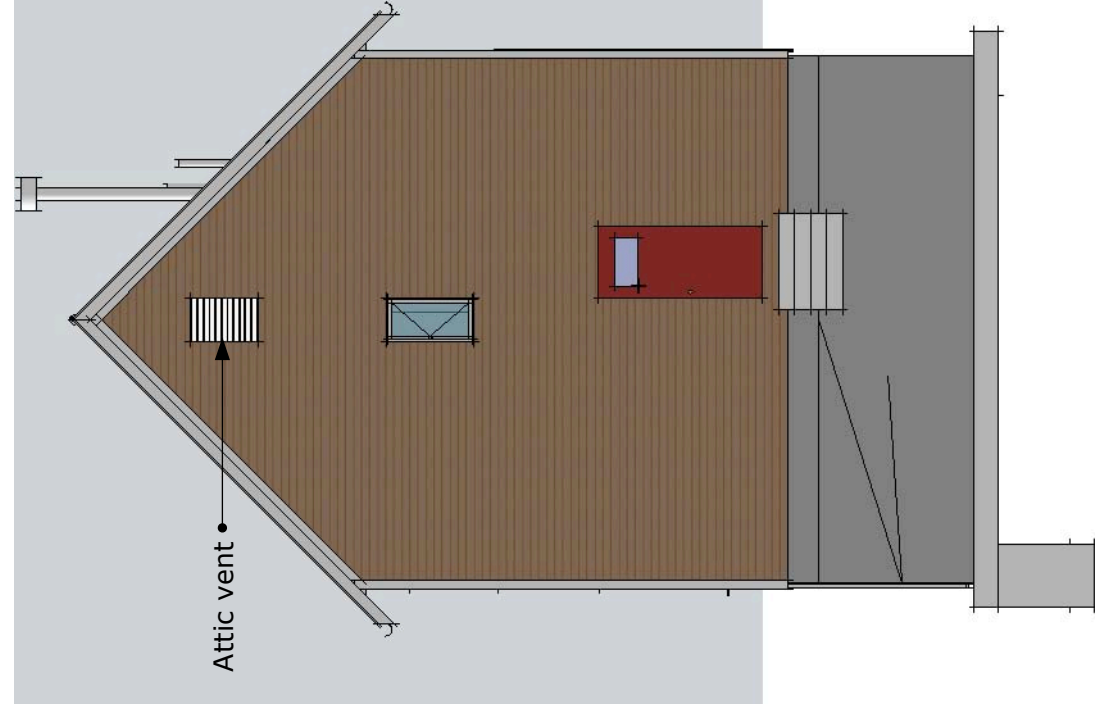
Date:
19-Apr-2010



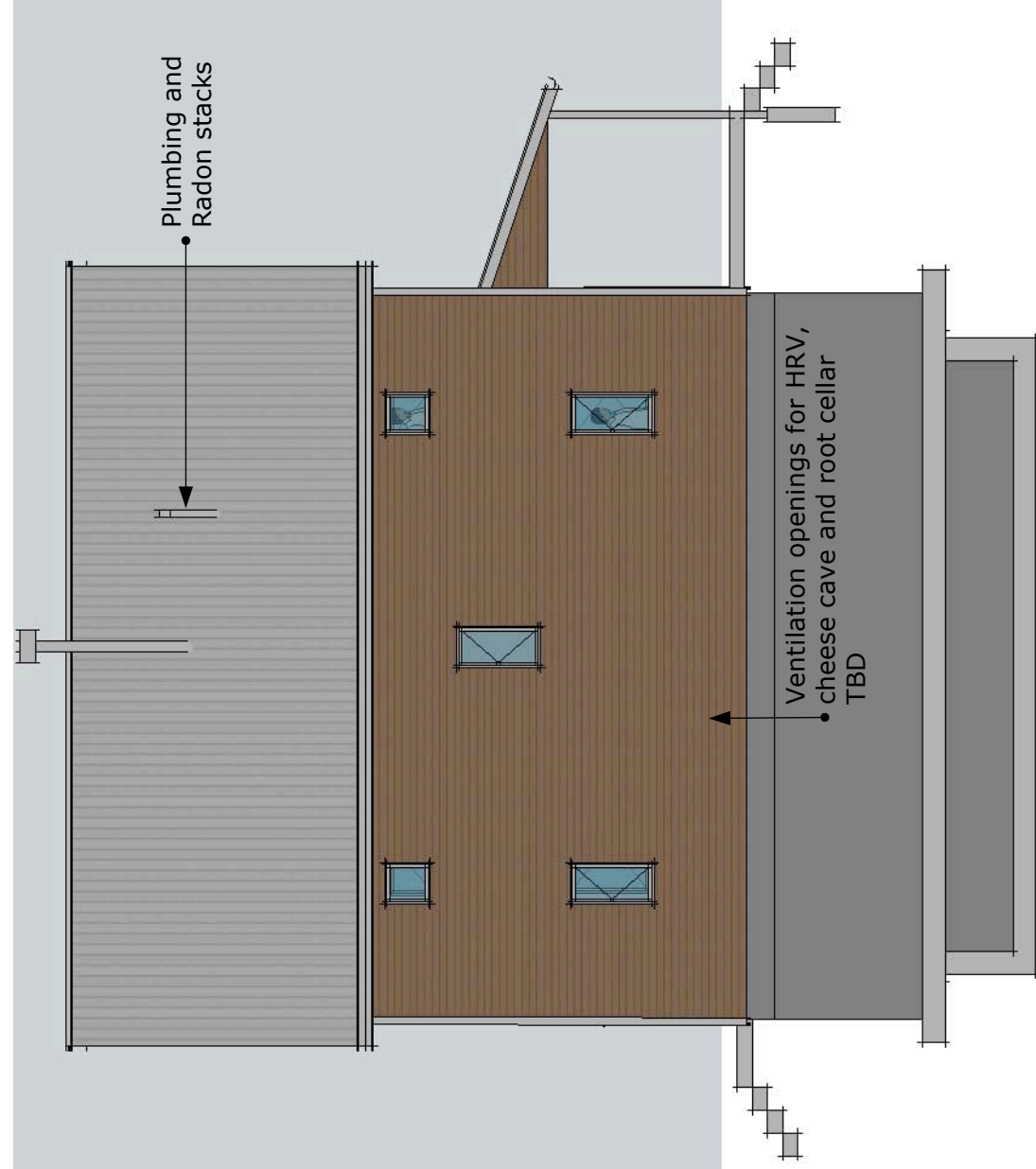
West Elevation



South Elevation



East Elevation



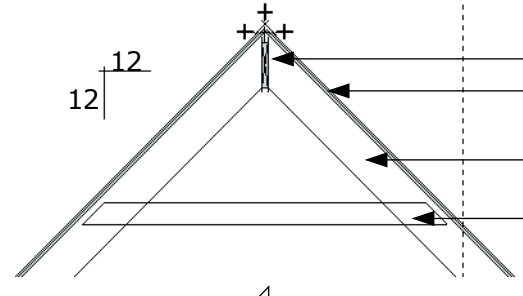
North Elevation

Title:
Elevations

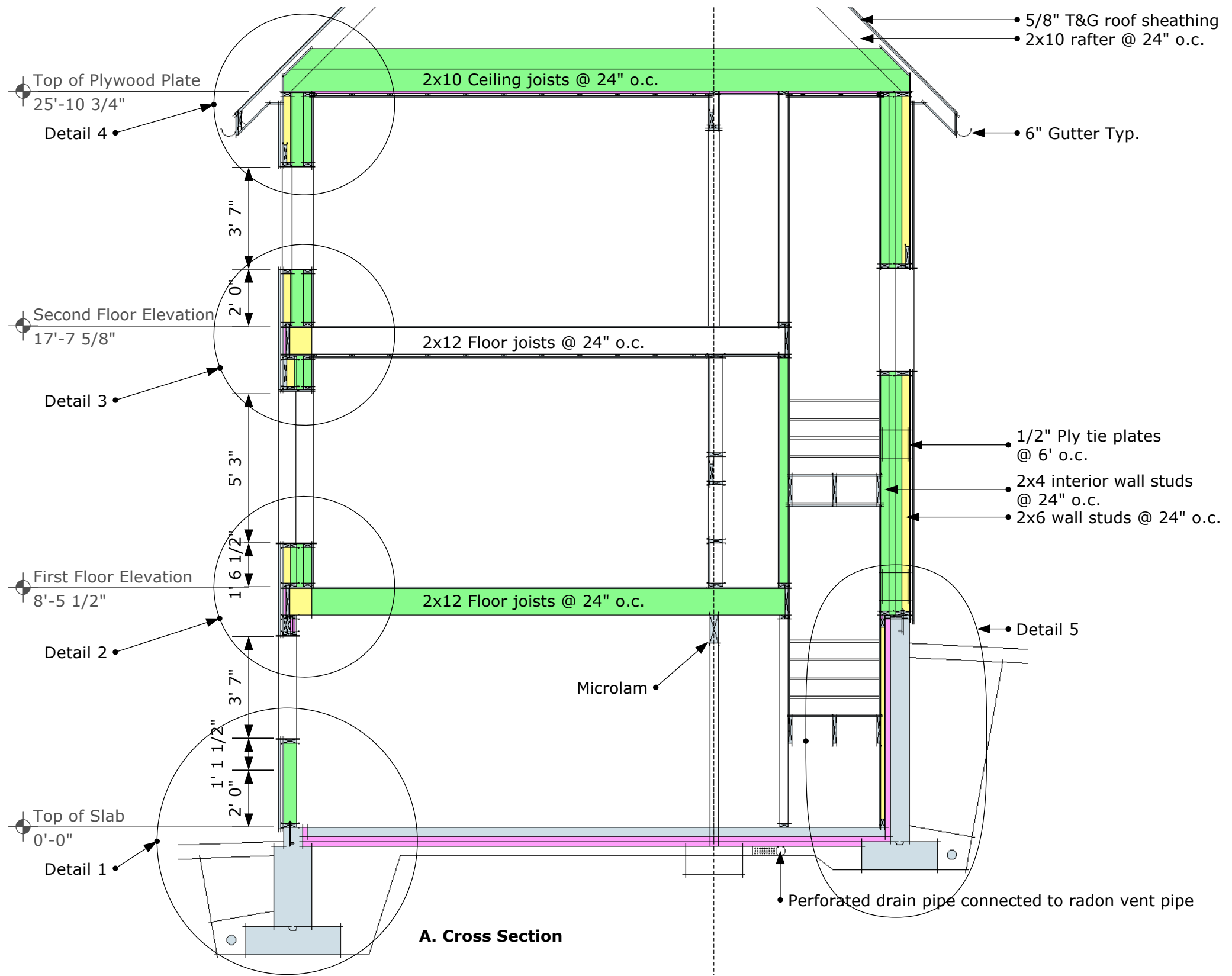
Scale:
1/8" = 1'-0"

Date:
19-Apr-2010

Top of Ridge Elevation
37'-5 3/4"



- 2x12 ridge beam
- Metal roof
- Roofing paper
- 2x6 collar tie every other rafter



Top of Plywood Plate
25'-10 3/4"

Detail 4

Second Floor Elevation
17'-7 5/8"

Detail 3

First Floor Elevation
8'-5 1/2"

Detail 2

Top of Slab
0'-0"

Detail 1

A. Cross Section

- 5/8" T&G roof sheathing
- 2x10 rafter @ 24" o.c.

6" Gutter Typ.

2x12 Floor joists @ 24" o.c.

2x12 Floor joists @ 24" o.c.

Microlam

- 1/2" Ply tie plates @ 6' o.c.
- 2x4 interior wall studs @ 24" o.c.
- 2x6 wall studs @ 24" o.c.

Detail 5

Perforated drain pipe connected to radon vent pipe

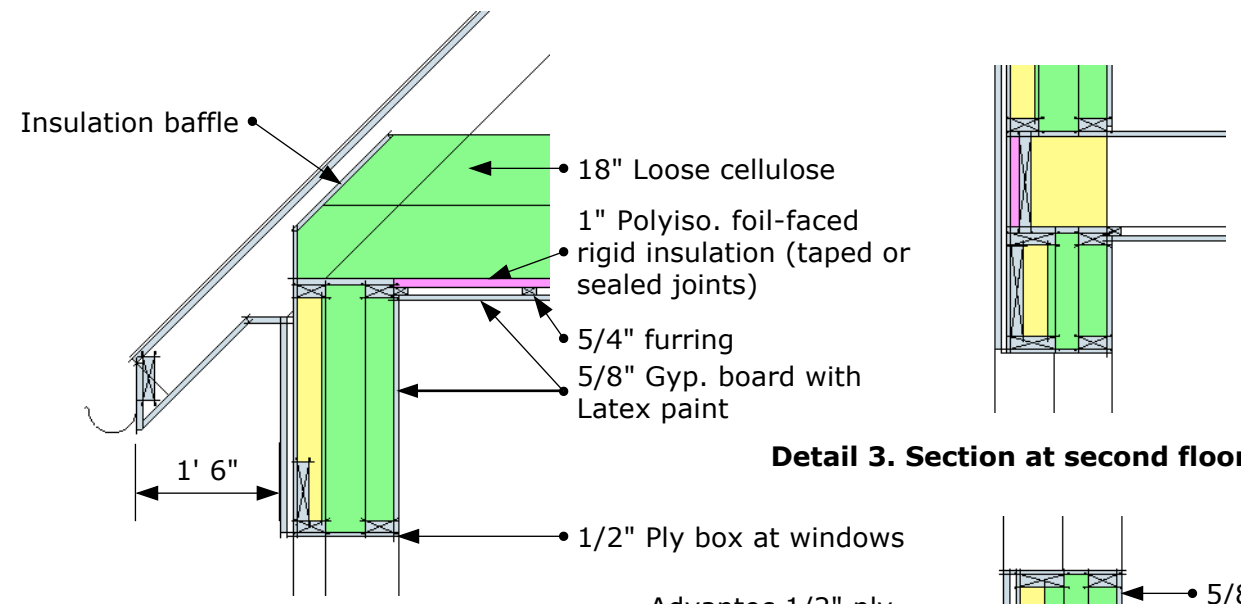
Up Hill House

Cambridge, New York

Title:
Wall Section

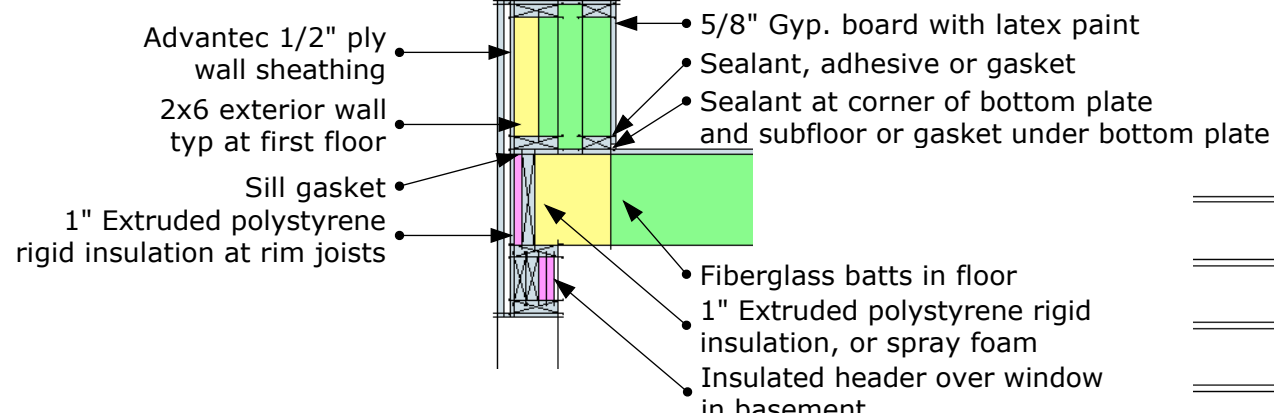
Scale:
1/4" = 1'-0"

Date:
19-Apr-2010

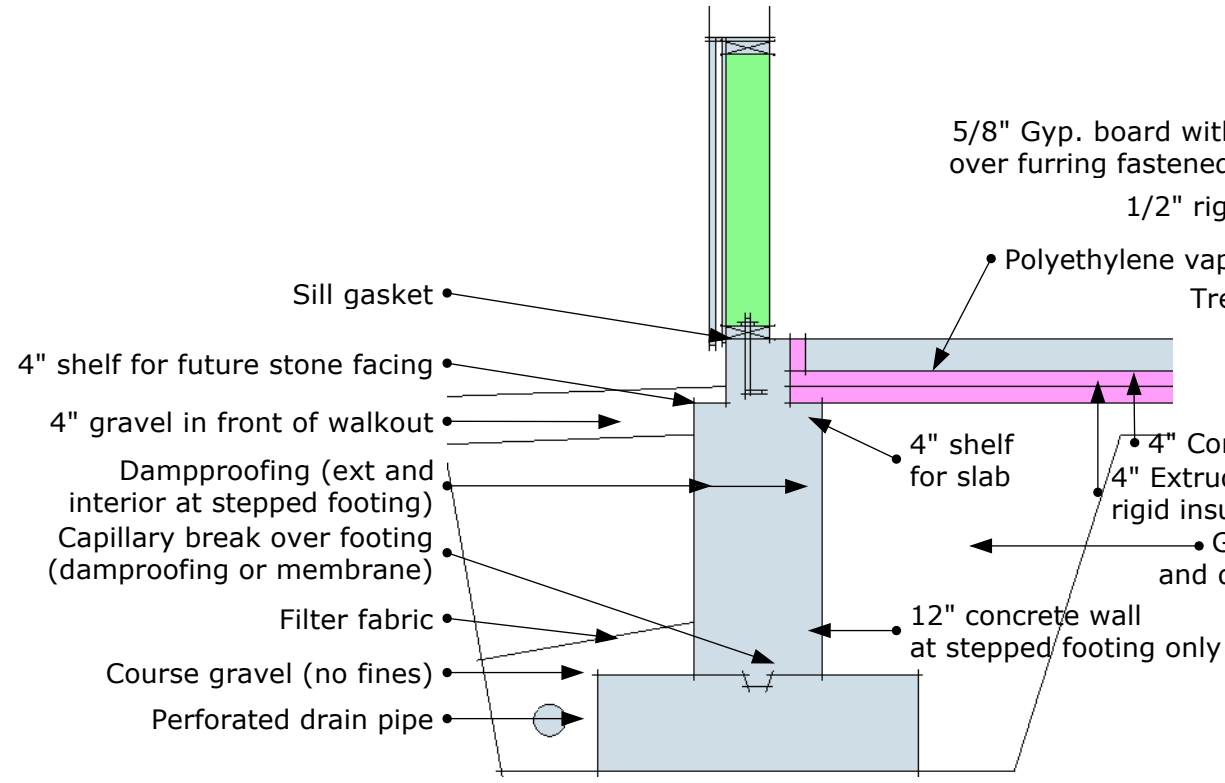


Detail 3. Section at second floor

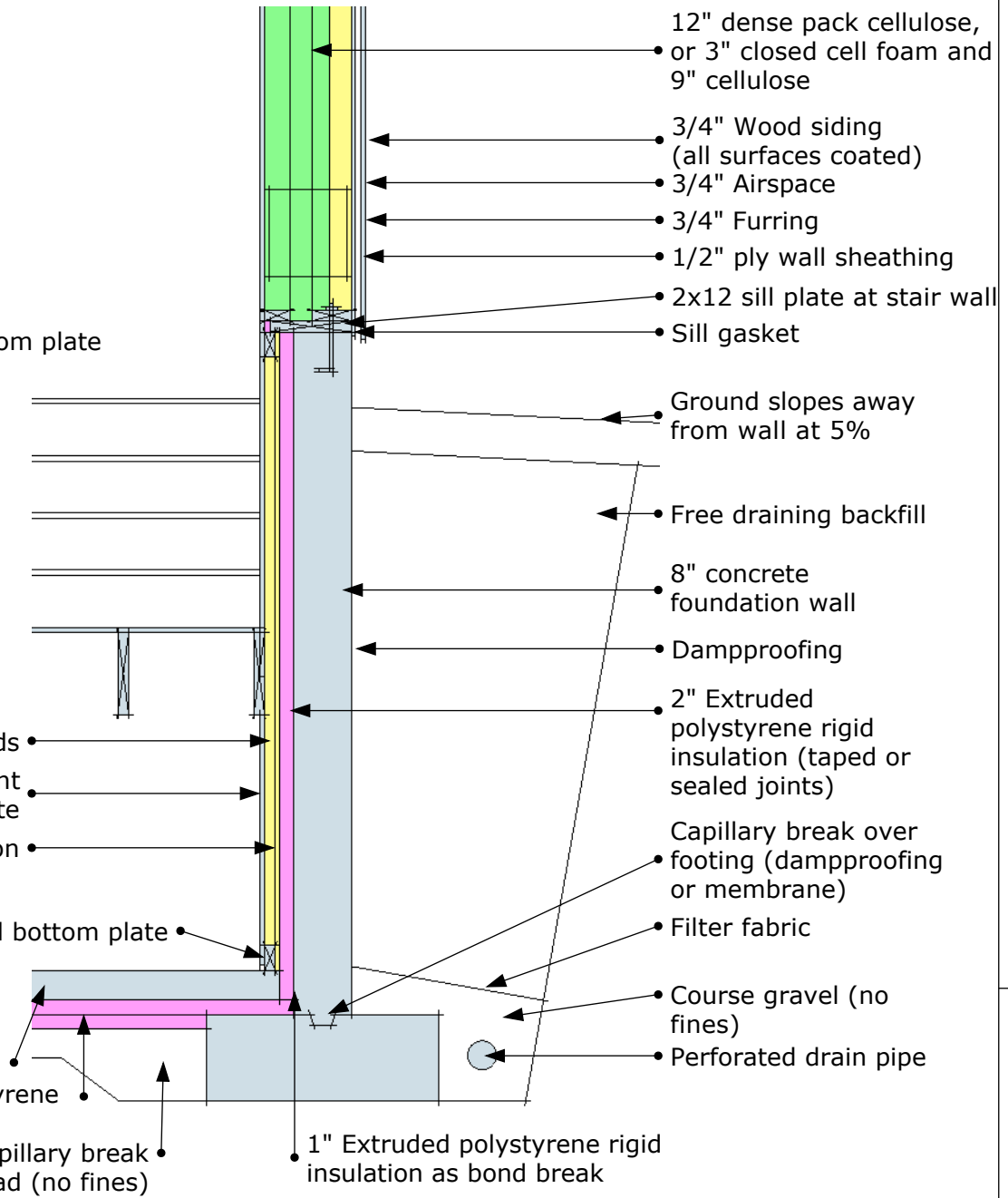
Detail 4. Section at ceiling/roof



Detail 2. Section at first floor



Detail 1. Section at stepped footing



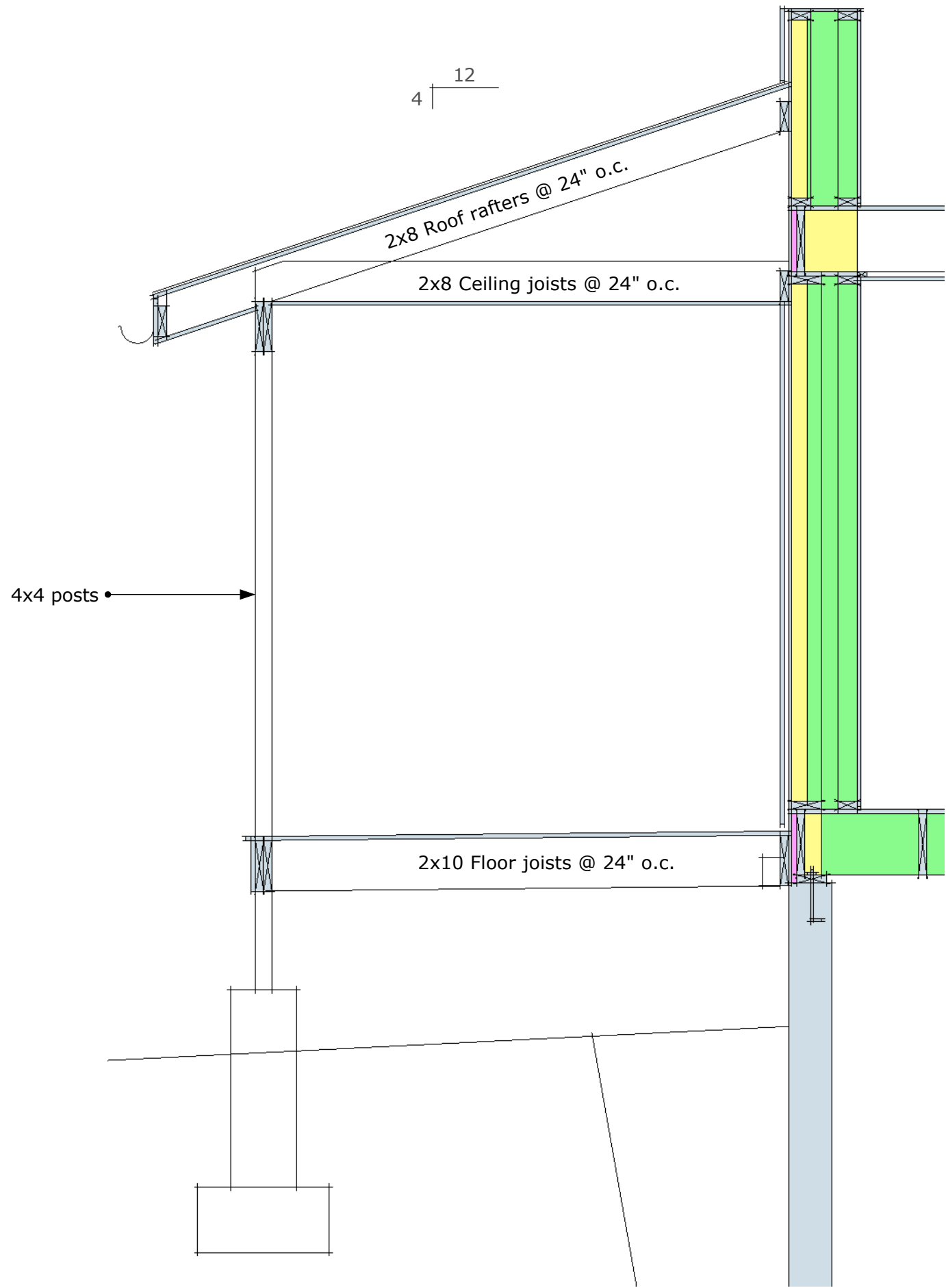
Detail 5. Section at stair

Up Hill House

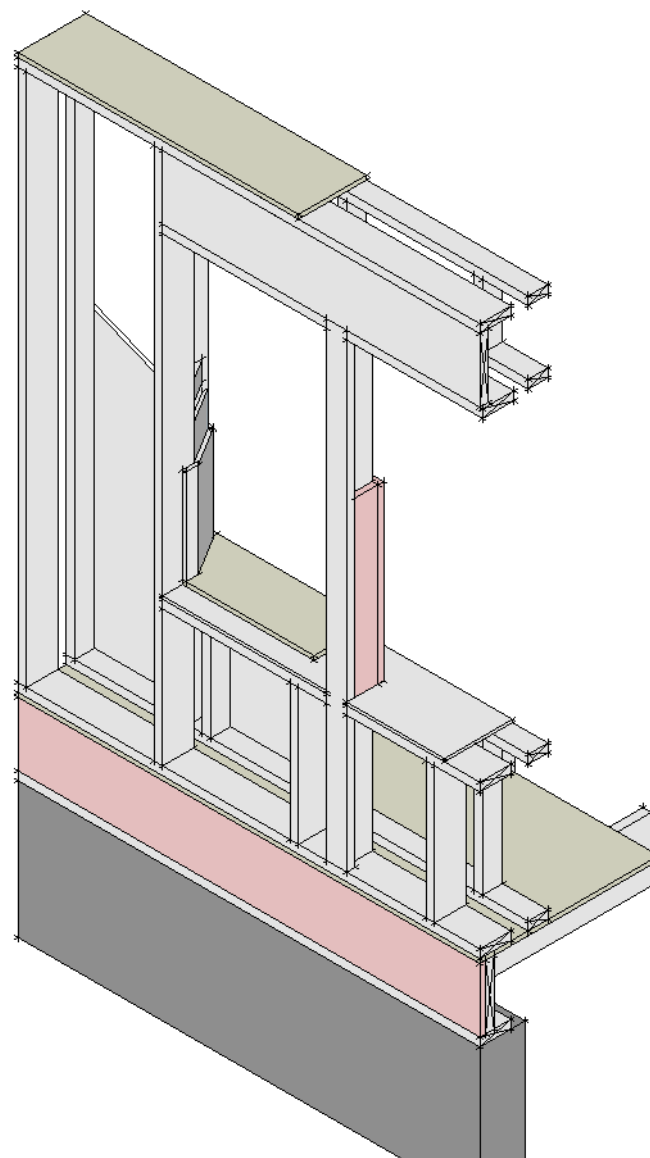
Cambridge, New York

Title:
Wall Section
Details
Scale:
1/2" = 1'-0"

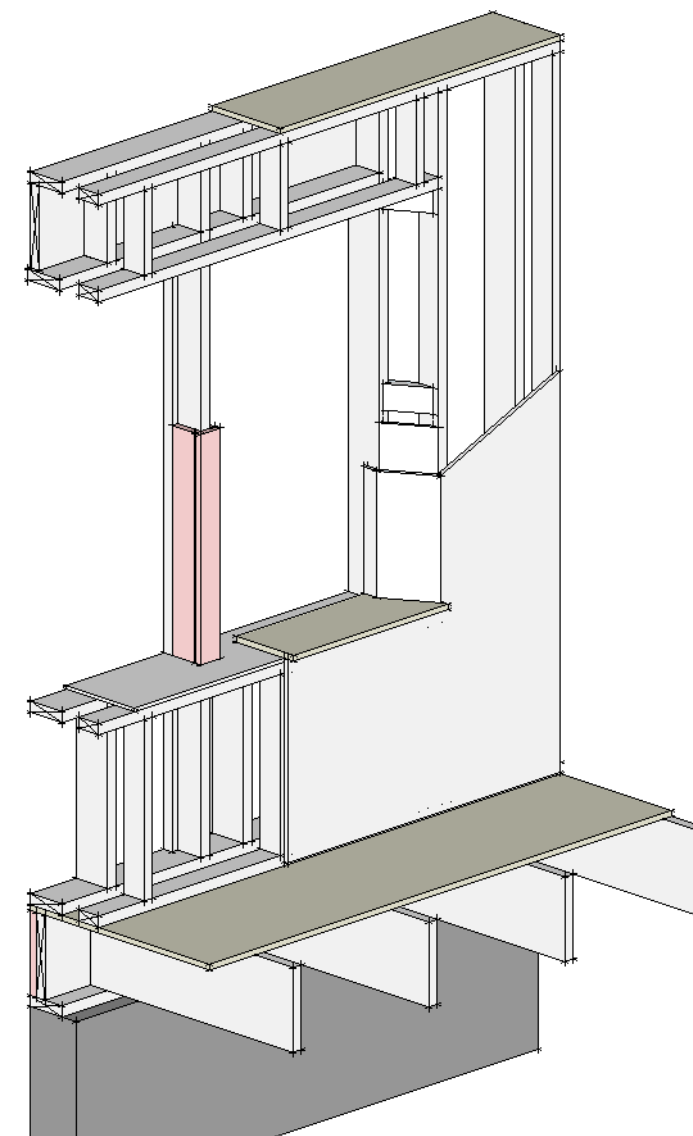
Date:
19-Apr-2010



B. Section at porch



**Exterior View
Window framing detail
@ beveled edge**



**Interior View
Window framing detail
@ beveled edge**

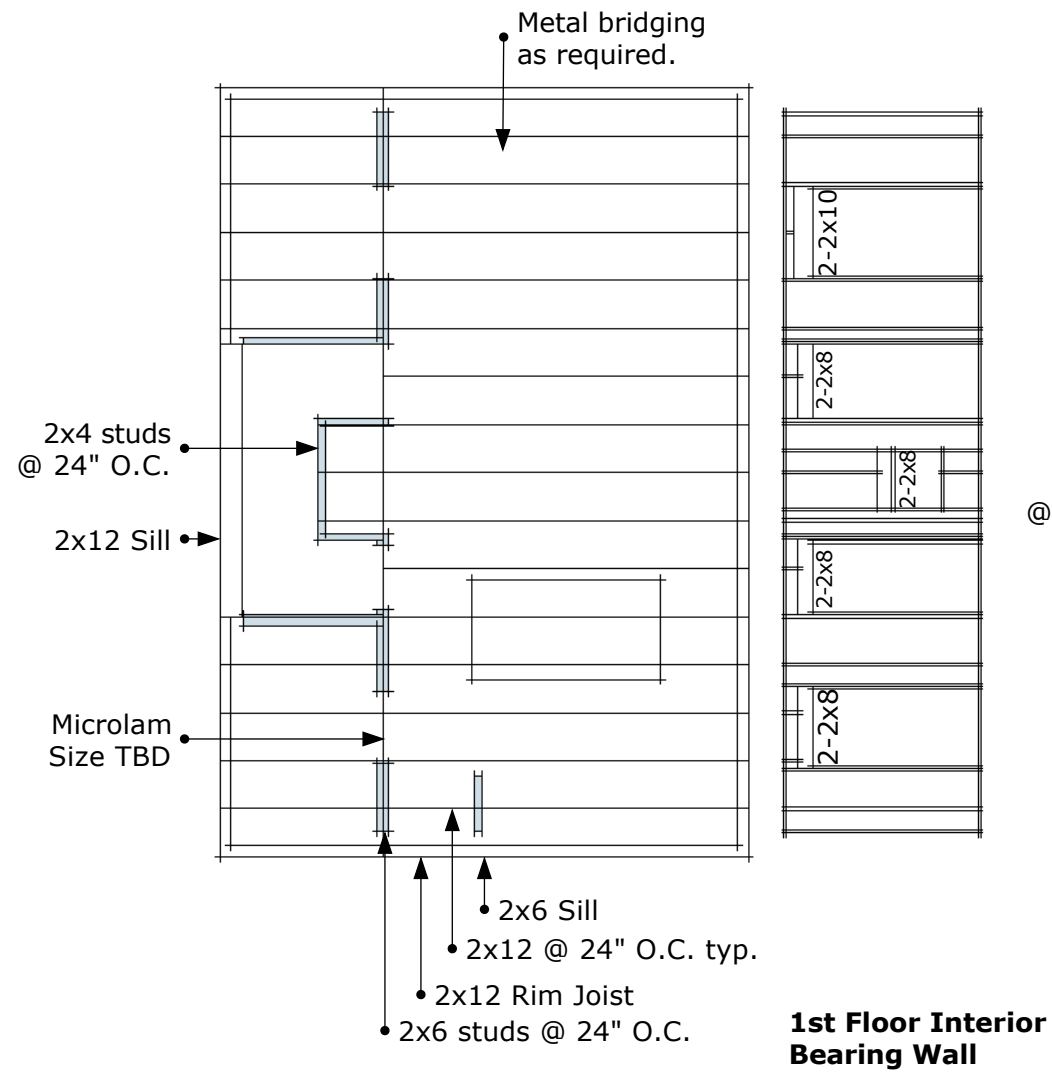
Up Hill House

Cambridge, New York

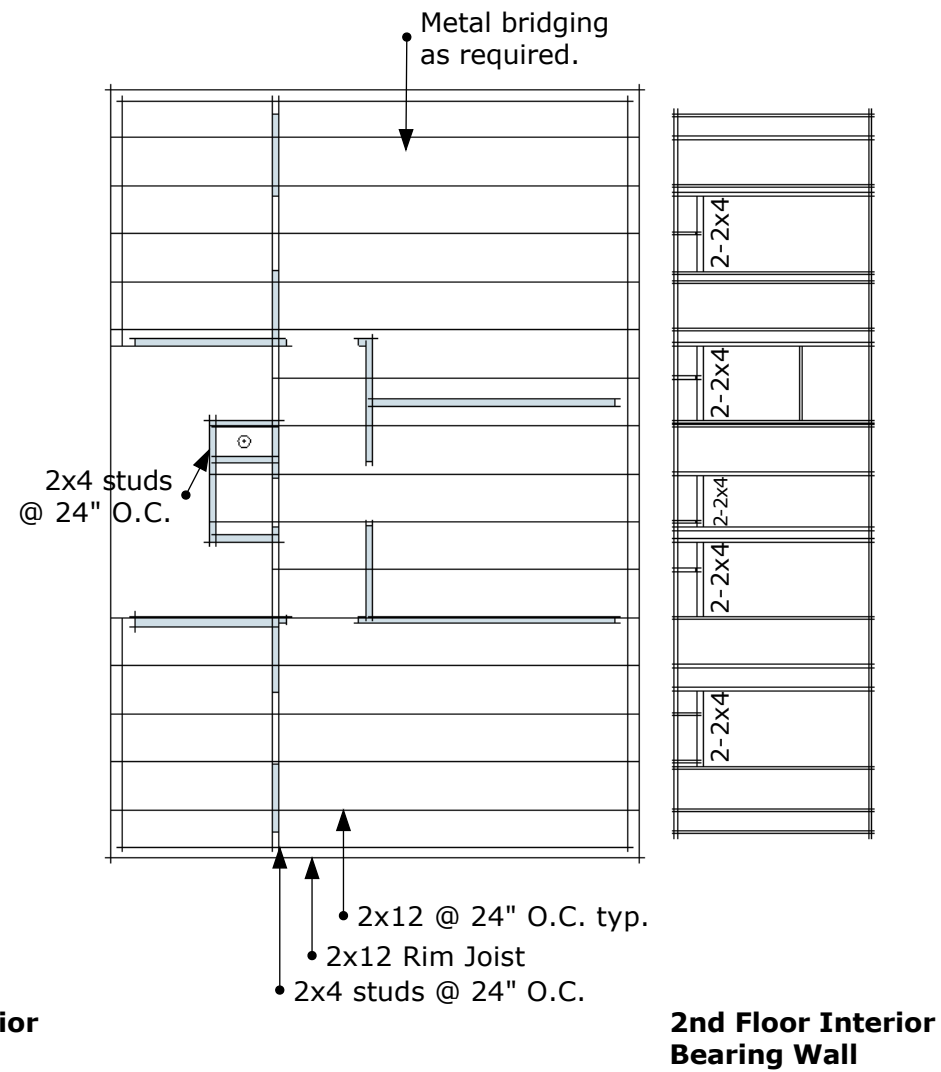
Title:
Details

Scale:
1/2" = 1'-0"

Date:
19-Apr-2010

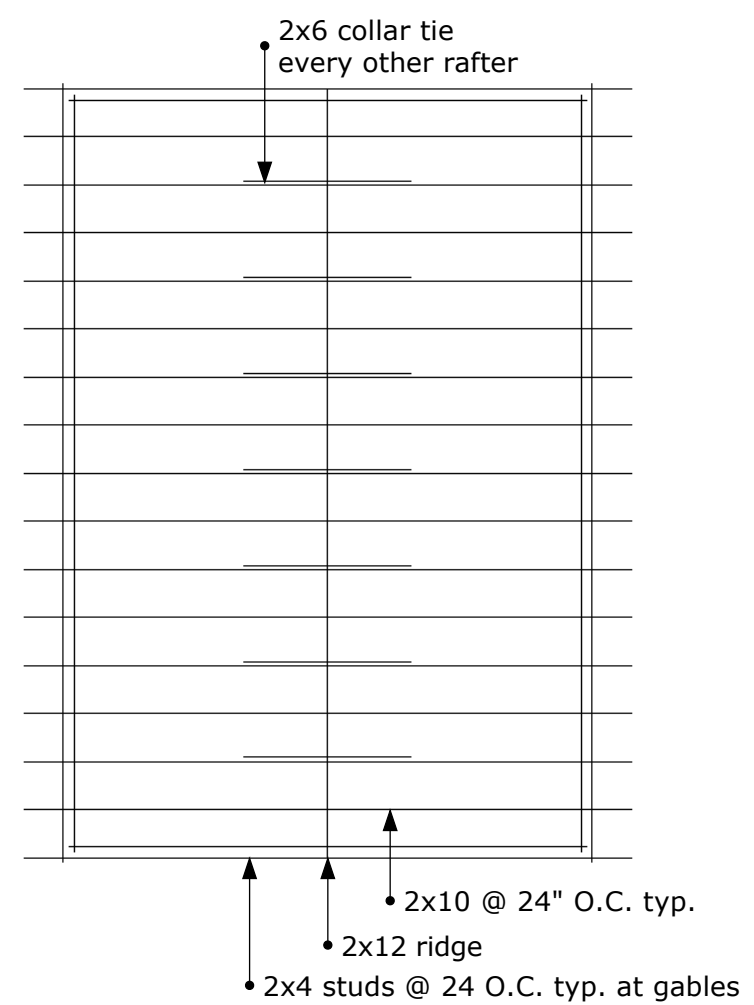


First Floor Framing Plan



Second Floor Framing Plan

Note: Shaded walls shown to indicate location of walls above framing.



Roof Framing Plan

Up Hill House
Cambridge, New York

Title:
Framing Plans

Scale:
1/8" = 1'-0"

Date:
19-Apr-2010

Up Hill House
Cambridge, New York

Title:
Interior
Elevations
Scale:
1/2" = 1'-0"

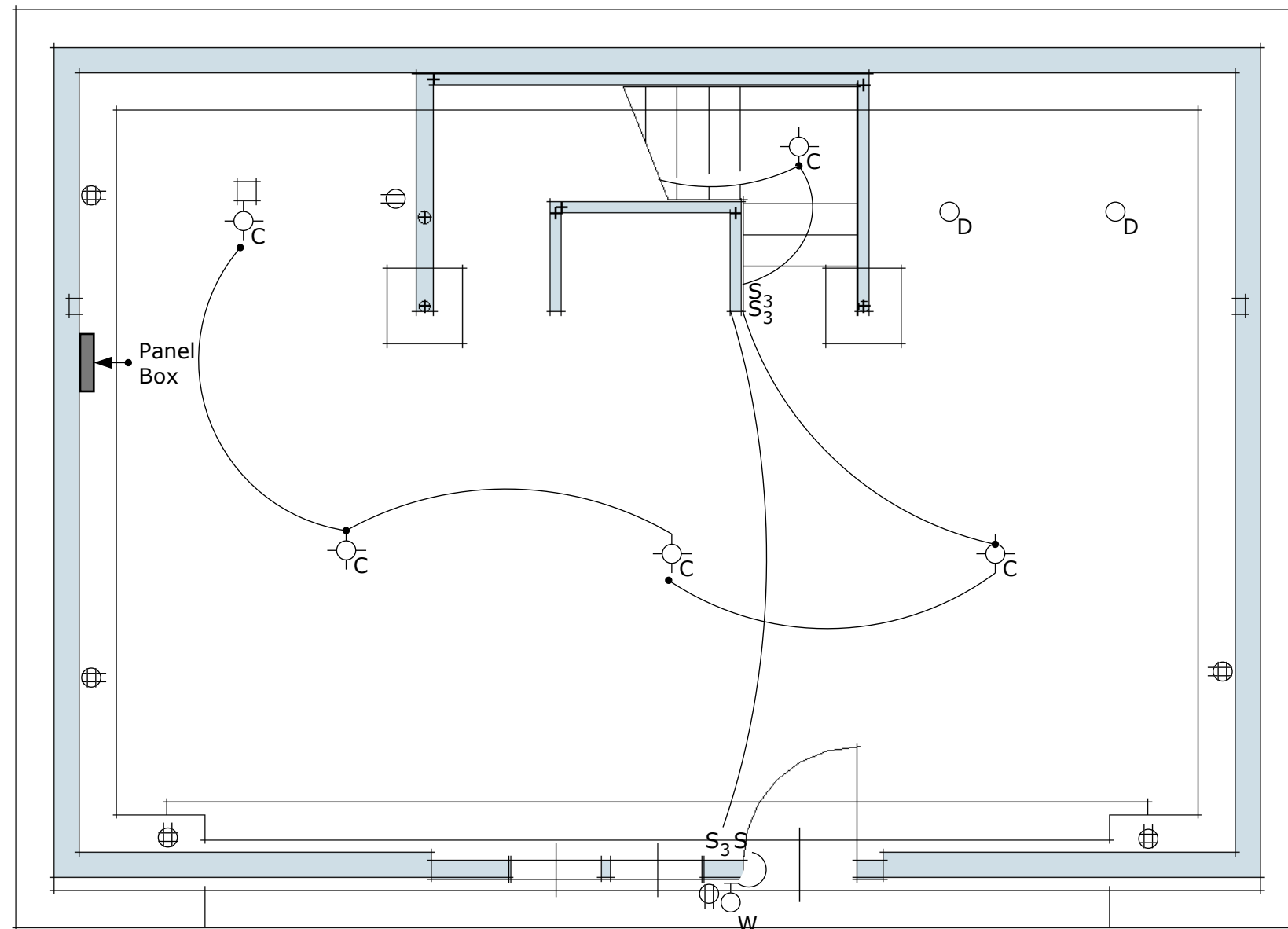
Date:
19-Apr-2010

A-10




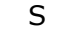
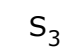


#

#

#



Basement Electrical Plan

-  Ceiling mounted light fixture
-  Wall mounted light fixture
-  Ceiling mounted drop chain light fixture
-  Light switch
-  Light switch - 3 way
-  Double Outlet
-  Quadruplex Outlet

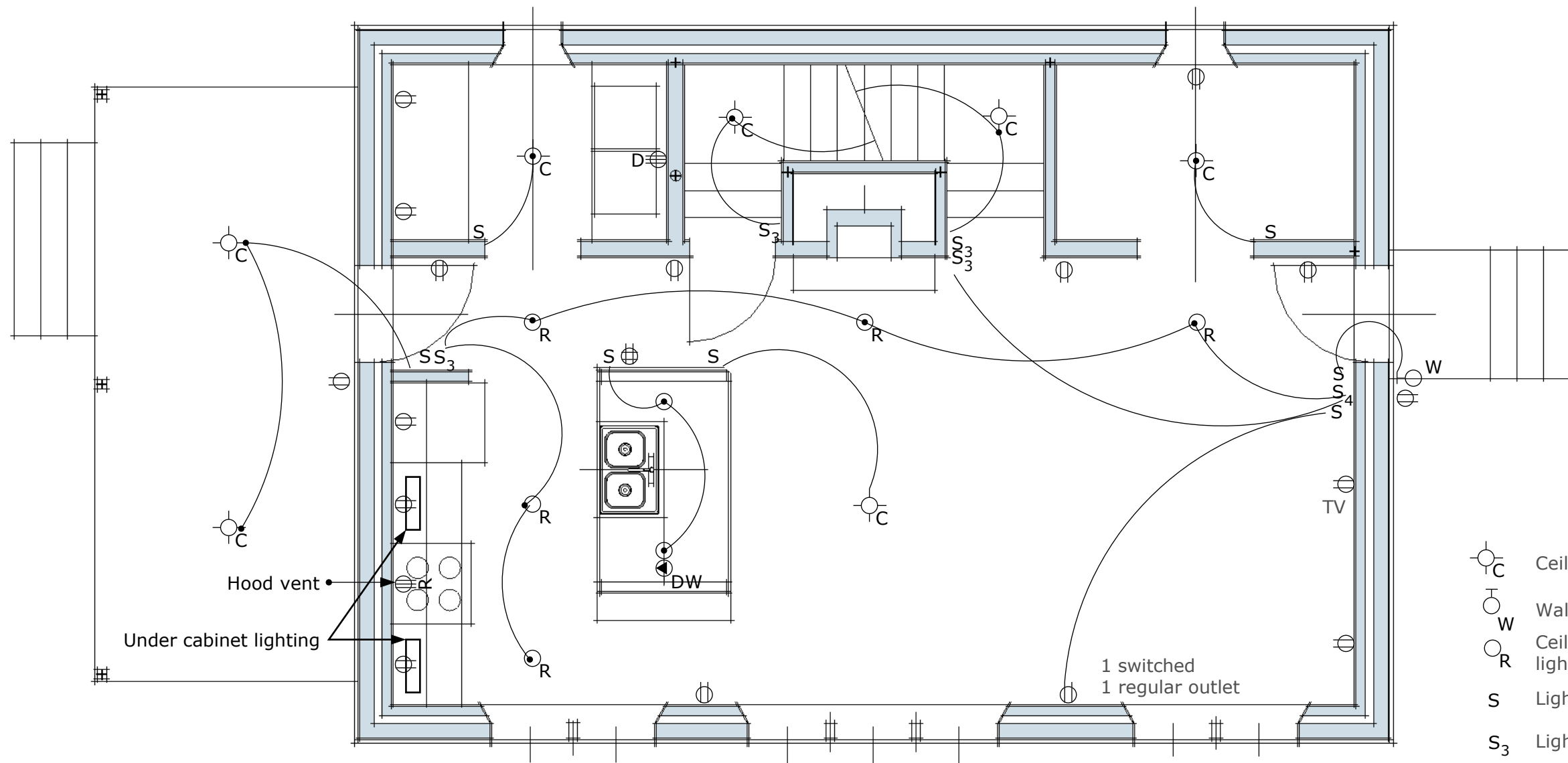
Up Hill House

Cambridge, New York




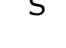
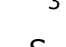




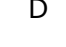

Title:
Electrical Plan

Scale:
1/4" = 1'-0"

Date:
19-Apr-2010



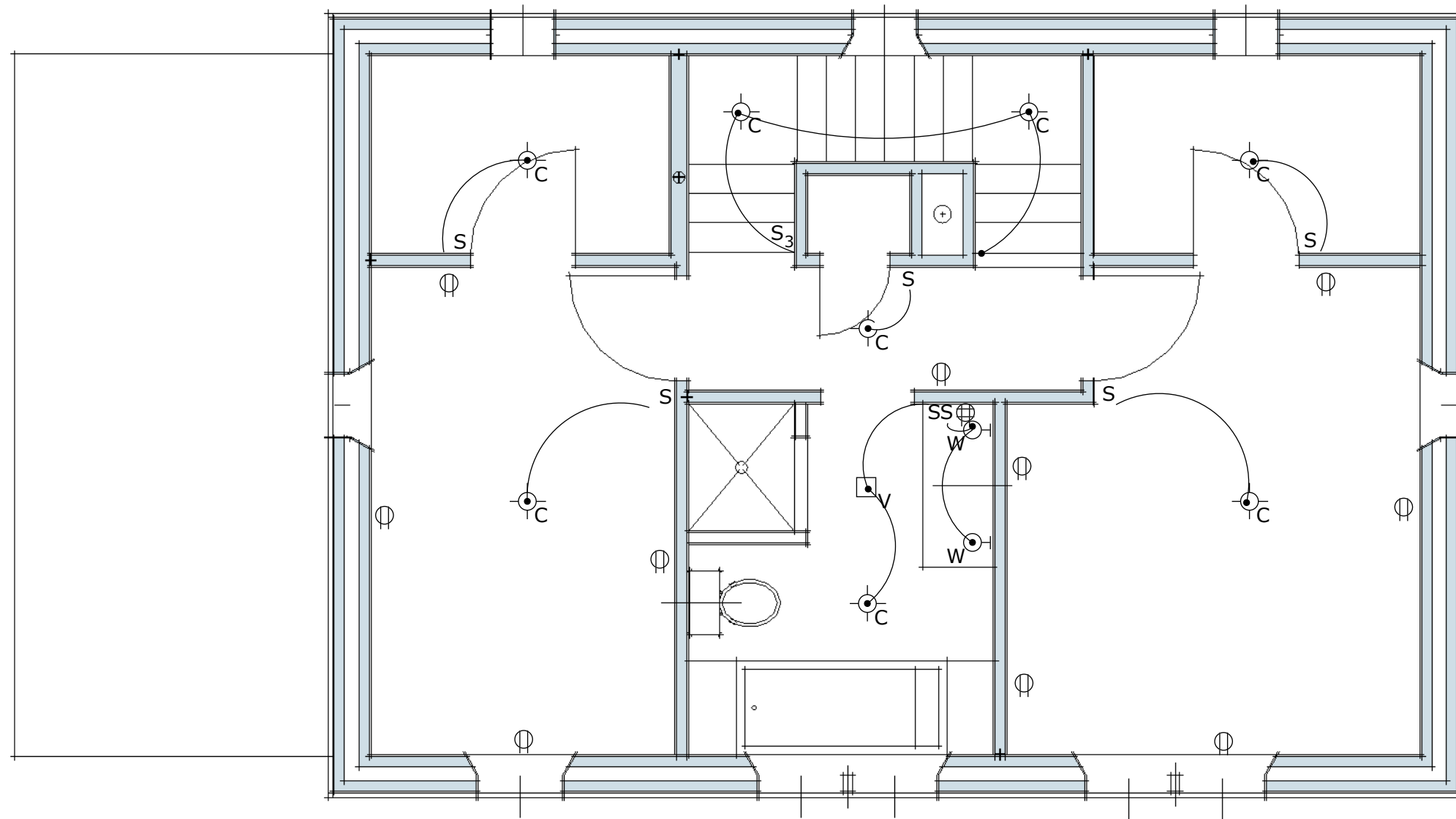
First Floor Electrical Plan

-  C Ceiling mounted light fixture
-  W Wall mounted light fixture
-  R Ceiling mounted recessed light fixture
-  S Light switch
-  S₃ Light switch - 3 way
-  S₄ Light switch - 4 way
-  ⊖ Double Outlet
-  ⊕ Quadruplex Outlet
-  ⊗ Range Outlet
-  DW Dishwasher Outlet
-  D Dryer Outlet

Title:
Electrical Plan

Scale:
1/4" = 1'-0"

Date:
19-Apr-2010



Second Floor Electrical Plan

Attic requirements:
 - 2 lights
 - 1 outlet
 - lead for future radon active pump

- _V Ceiling mounted vent
- ⊖_C Ceiling mounted light fixture
- ⊖_W Wall mounted light fixture
- ⊖_D Ceiling mounted drop chain light fixture
- S Light switch
- S₃ Light switch - 3 way
- ⊖ Double Outext
- ⊕ Quadraplex Outlet

Up Hill House
 Cambridge, New York

Title:
 Electrical Plan

Scale:
 1/4" = 1'-0"

Date:
 19-Apr-2010